

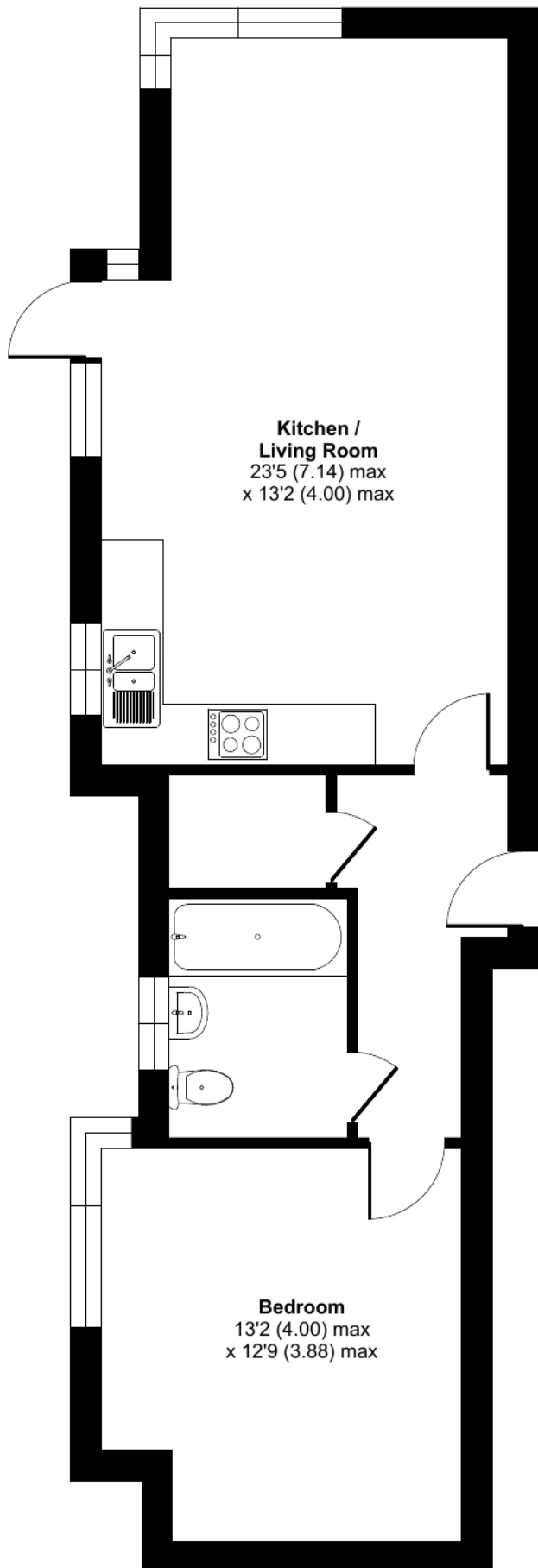
# Fleet Road, Fleet, GU51

Ground Floor 1 = 560 sq ft / 52 sq m

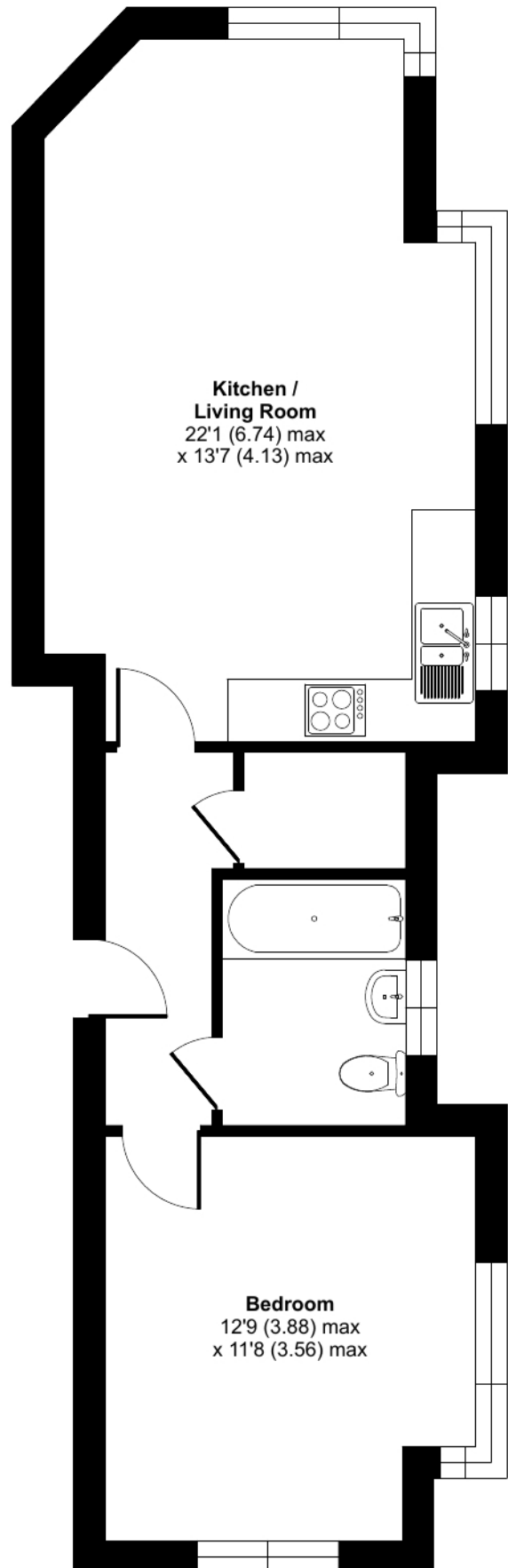
Ground Floor 2 = 536 sq ft / 49.7 sq m

Total = 1096 sq ft / 101.8 sq m

For identification only - Not to scale



**GROUND FLOOR 1**



**GROUND FLOOR 2**